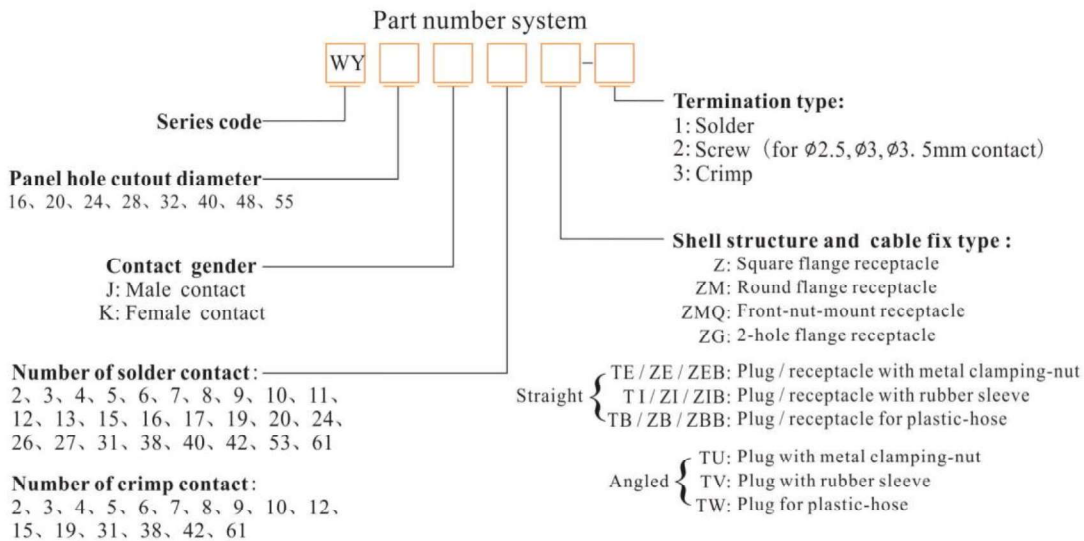




● **WY Series**



● **Remarks :** The rated current decreases according to the number of contacts, more contacts, less rated current.

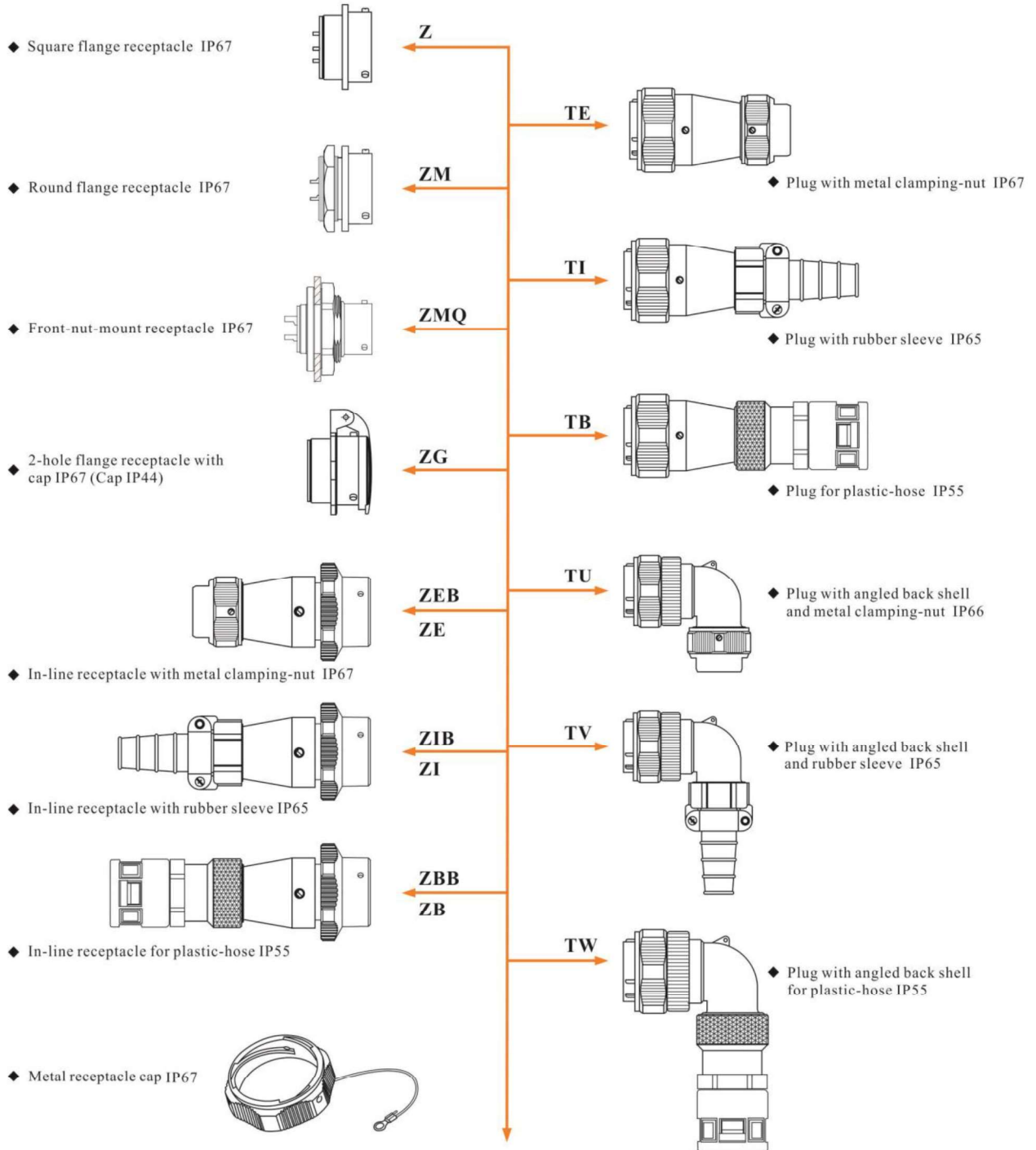
Number of contact	1-3	4-10	11-20	21-30	31-40	41-50	51-61
Rated current decrease rate (%)	0	10	20	30	40	50	60

- ★ Each side can be male or female contact
- ★ Solder contact spec see page 87-88
- ★ Crimp contact spec see page 89-92

Material and spec

Coupling	Bayonet
Shell material	Zinc alloy with chrome plating
Insert material	PPS, max temperature 260 °C
Contact material	Brass with gold plating
Termination	Solder: Ø1, 1.5, 2.5, 3.5, 5, 5mm contact Screw: Ø2.5, 3, 3.5mm contact Crimp: Ø1, 1.5, 2.5, 3.5mm contact
Mating cycle	500
Temperature range	-40°C~+85°C

WY Series Mating diagram



★ IP rating marked is for after mated or with cap.

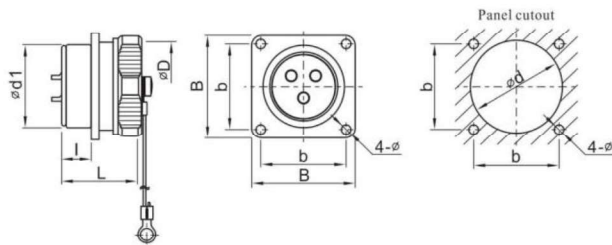
★ Each side can be male or female contact

★ Solder contact spec see page 87-88

★ Crimp contact spec see page 89-92

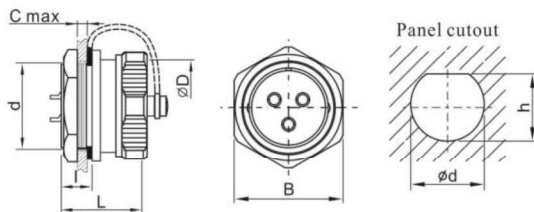


● Square flange panel receptacle: Z IP67



Dimension(mm)	WY16	WY20	WY24	WY28	WY32	WY40	WY48	WY55
d1	15.8	19.8	23.8	27.8	31.8	41.8	47.8	54.8
D	18	22	26	30	35	44	52	59
I	9.7	9.8	10	9.8	14.4	14.2	14.2	14
L	21.6	23	23	23	34	34	34	34
b	20	22	26	30	32	40	48	52
B	26	29	32	36	42	50	58	64
d	16.5	20.5	24.5	28.5	32.5	40.5	48.5	55.5
ø	3.2	3.2	3.2	3.2	3.5	4.5	4.5	4.5

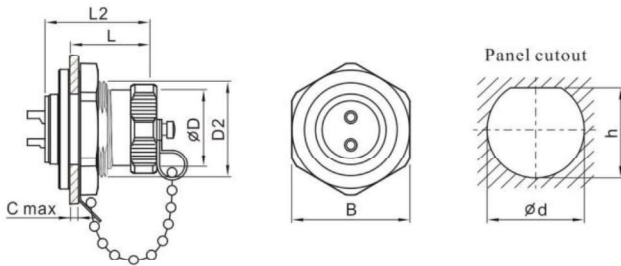
● Round flange panel receptacle: ZM IP67



Dimension(mm)	WY16	WY20	WY24	WY28
d	M16X1	M20X1	M24X1	M28X1
D	18	22	26	30
C	5	5	5	5
I	9.7	9.9	10	10.2
L	22	23	23	23
B	21.2	25.5	29.2	33.3
ød	15.7	19.7	23.9	27.7
h	15.3	19.3	23.2	26.9

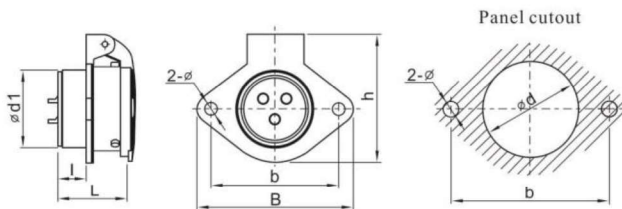


● Front-nut-mount receptacle: ZMQ IP67



Dimension(mm)	WY16	WY20	WY24	WY28
D	18	22	26	30
D2	M22X1	M26X1	M30X1	M34X1
L	16	17	17	17
L2	21.6	23	23	23
C	5	5	5	5
B	26.8	30.8	34.8	38.8
ød	22	26	30	34
h	20.6	24.6	28.6	32.6

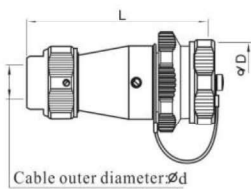
● 2-hole flange panel receptacle with cap: ZG IP67 (Cap IP44)



Dimension(mm)	WY16	WY20	WY24	WY28	WY32	WY40	WY48	WY55
d1	15.8	19.8	23.8	27.8	31.8	39.8	47.8	54.8
d	16.5	20.5	24.5	28.5	32.5	40.5	48.5	55.5
l	10	10	10	10	15.4	14.7	14.3	14
L	22	23	23	23	34	34	34	34
b	30	35	40	45	55	65	80	85
B	38	44	50	55	67	77	92	98
h	32.5	36.5	40.5	45.5	52.5	63.5	74.5	80
ø	3.5	4.5	4.5	4.5	5.5	5.5	5.5	6.5

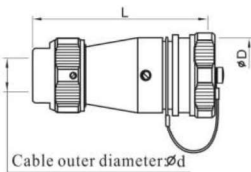


● In-line receptacle with metal clamping-nut B: ZEB IP67



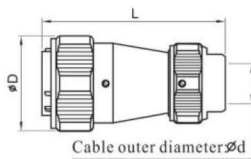
Dimension(mm)	WY16	WY20	WY24	WY28
D	18	22	26	30
L	55	63	67	70
$\varnothing d$	5-6.5	9-10.5	9-10.5	10.5-12.5

● In-line receptacle with metal clamping-nut: ZE IP67



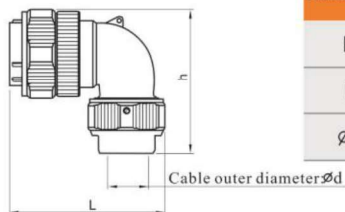
Dimension(mm)	WY32	WY40	WY48	WY55
D	35	44	52	59
L	91	104	108	132
$\varnothing d$	15.5-17	18-20	I: 18-20 II: 24.5-26	24.5-26

● Plug with metal clamping-nut: TE IP67



Dimension(mm)	WY16	WY20	WY24	WY28	WY32	WY40	WY48	WY55
D	25	30	34	38.5	44.5	54	62	68.5
L	53	62	68	68	88	103	108	132
$\varnothing d$	5-6.5	9-10.5	9-10.5	10.5-12.5	15.5-17	18-20	I: 18-20 II: 24.5-26	24.5-26

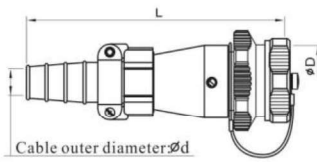
● Plug with angled back shell and metal clamping-nut: TU IP66



Dimension(mm)	WY16	WY20	WY24	WY28	WY32	WY40	WY48	WY55
h	43.2	53	54	56.7	74.6	80	98	105.2
L	48	58	59	62	83	92	99	110
$\varnothing d$	5-6.5	9-10.5	9-10.5	10.5-12.5	15.5-17	18-20	24.5-26	24.5-26



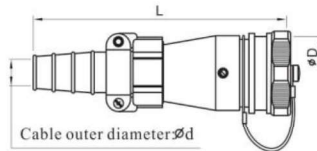
● In-line receptacle with cable clamping plates B: ZIB IP65



Dimension(mm)	WY16	WY20	WY24	WY28
D	18	22	26	30
L	73	86	92	101
Ød	7-8	9-10.5	9-10.5	11.5-13.6

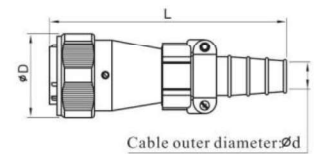
Cable outer diameter: Ød

● In-line receptacle with cable clamping plates: ZI IP65



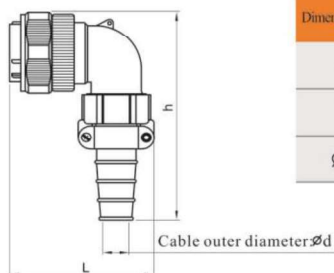
Dimension(mm)	WY32	WY40	WY48	WY55
D	35	44	52	59
L	119	131	137	211
Ød	13-15.6	15.5-18.8	I:15.5-18.8 II:24-28	24-28

● Plug with cable clamping plates: TI IP65



Dimension(mm)	WY16	WY20	WY24	WY28	WY32	WY40	WY48	WY55
D	25	30	34	38.5	44.5	54	62	68.5
L	73	87	93	101	119	131	138	162
Ød	7-8	9-10.5	9-10.5	11.5-13.6	13-15.6	15.5-18.8	I:15.5-18.8 II:24-28	24-28

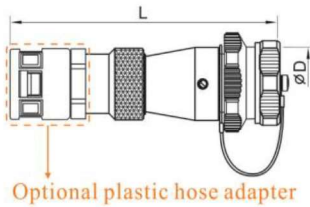
● Plug with angled back shell and cable clamping plates: TV IP65



Dimension(mm)	WY16	WY20	WY24	WY28	WY32	WY40	WY48	WY55
h	60	80	80	93	107	118	127	140
L	46	53	57	70	81	90	98	108
Ød	7-8	9-10.5	9-10.5	11.5-13.6	13-15.6	15.5-18.8	24-28	24-28

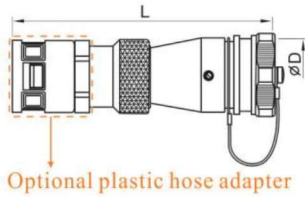


● In-line receptacle for plastic-hose: ZBB IP55



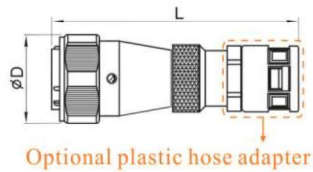
Dimension (mm)	WY16	WY20	WY24	WY28
D	18	22	26	30
L	80	93	96	107
Adapter size	PG7	PG11	PG11	PG16
Hose size	1/4"	3/8"	3/8"	1/2"

● In-line receptacle for plastic-hose: ZB IP55



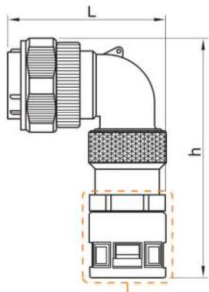
Dimension (mm)	WY32	WY40	WY48	WY55
D	35	44	52	59
L	123	134	139	155
Adapter size	PG21	PG29	I: PG29 II: PG36	PG36
Hose size	3/4"	1"	I: 1" II: 1 1/4"	1 1/4"

● Plug for plastic-hose: TB IP55



Dimension (mm)	WY16	WY20	WY24	WY28	WY32	WY40	WY48	WY55
D	25	30	34	38.5	44.5	54	62	68.5
L	77	90	95	102	120	134	140	157
Adapter size	PG7	PG11	PG11	PG16	PG21	PG29	I: PG29 II: PG36	PG36
Hose size	1/4"	3/8"	3/8"	1/2"	3/4"	1"	I: 1" II: 1 1/4"	1 1/4"

● Plug with angled back shell for plastic-hose: TW IP55



Dimension (mm)	WY16	WY20	WY24	WY28	WY32	WY40	WY48	WY55
h	58	78	78	91	105	120	125	132
L	47	54	58	71	82	90	98	108
Adapter size	PG7	PG11	PG11	PG16	PG21	PG29	PG29	PG36
Hose size	1/4"	3/8"	3/8"	1/2"	3/4"	1"	1 1/4"	1 1/4"

Optional plastic hose adapter

